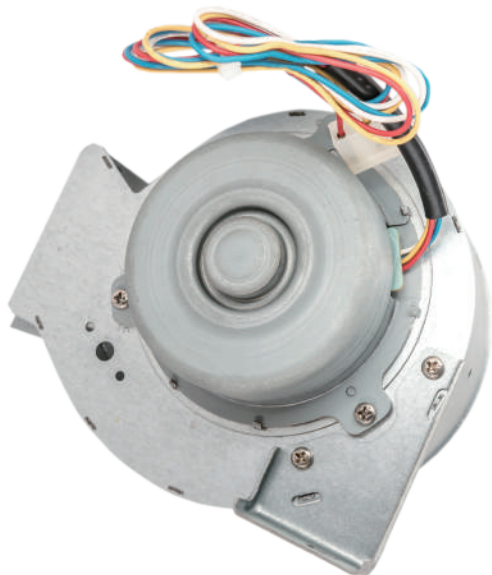


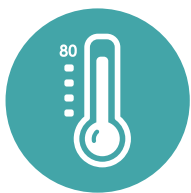
EXHAUST BLOWER

Specialized for gas-type water heater

Exhaust Blower for Water Heaters

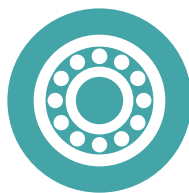


GREEN PRECISE DURABLE



80°C Resistance

Genese Exhaust Blower is specially designed for water heaters, and should be durable inside the chassis with high temperature. The blower can be guaranteed at 50°C and is durable up to 80°C.



Dual Ball Bearing

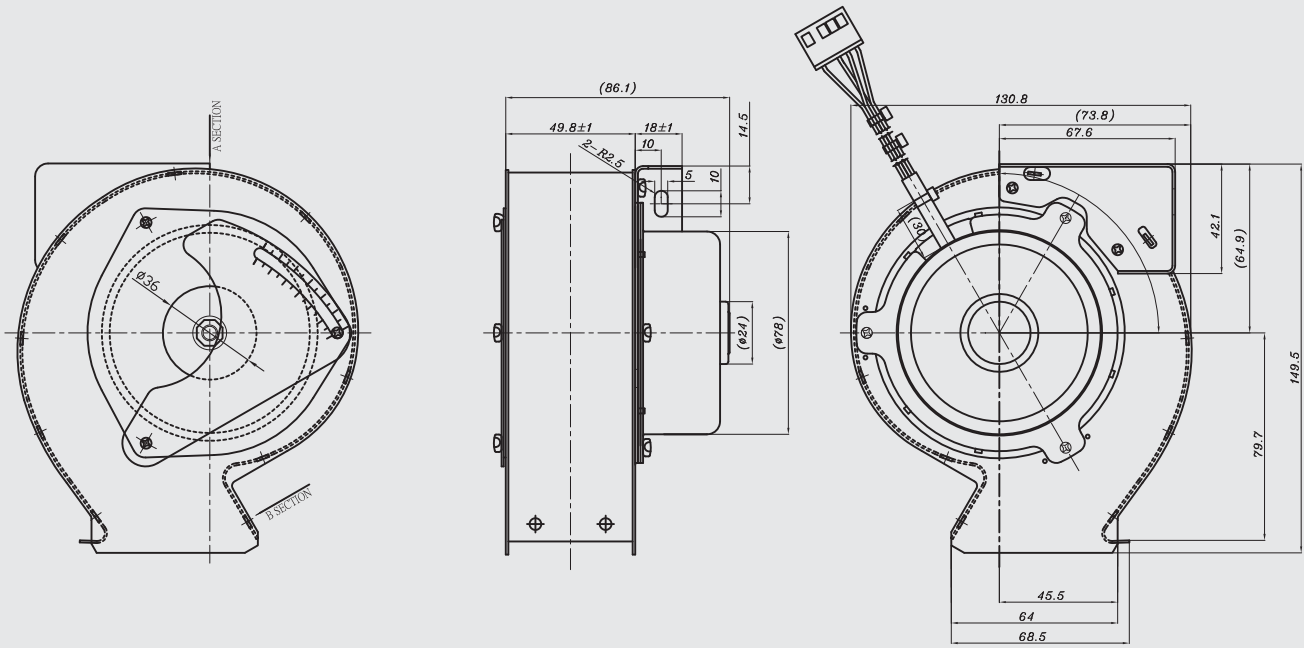
Genese uses only ball bearings in whole range of products including this blower. Ball bearings are much more durable than copper bearings, as well as creating less noise and ensures a much longer life expectancy.



3-Year Warranty

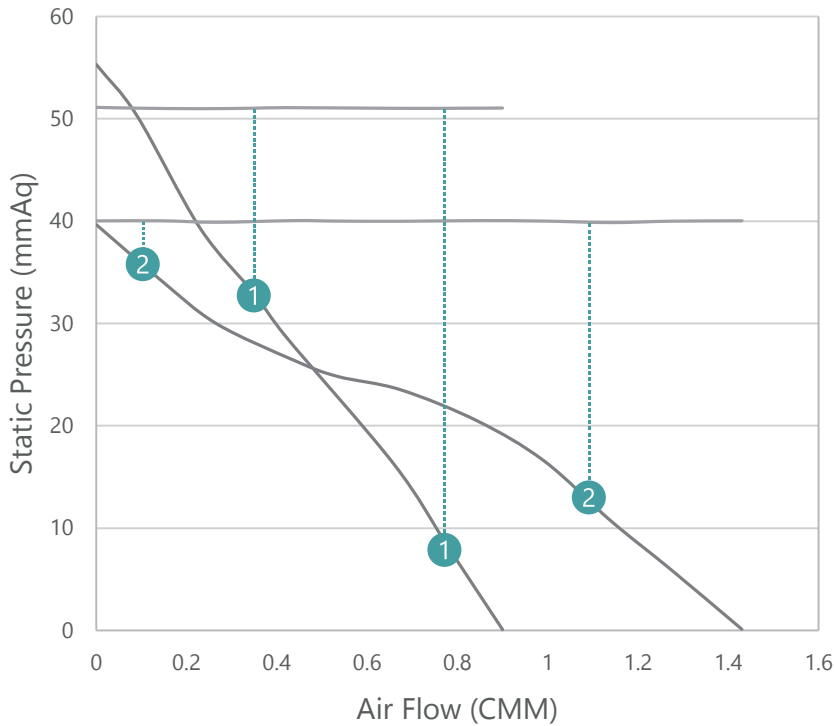
Genese blowers pass multiple burn-in and reliable tests, which can assure the quality with over 100,000 of cycle runs. Therefore we can proudly present our blowers with a full 3-year warranty for our customers.

TECHNICAL SPECIFICATION



Fan	Input VAC	Control VDC	Power W	Max. Flow m ³ /min	Rated Torque mN-m	Rotation RPM	Phase	Bearing
275YH0001	110-220VAC	40VDC	25	1.45	46.1	6390 ±10%	3	Ball bearing
375YH0001	110-220VAC	36VDC	26	1.6	50	6300 ±10%	3	Ball bearing

For reference only, motor specification should be adjusted based on provided loading.



	mmAq	CMM	RPM
1	8.1	0.78	5103
	32.9	0.35	5104
2	10.7	1.14	3986
	34.18	0.144	4004

- 1 GeneSe 275YH0001
- 2 GeneSe 375YH0001

